

**Adopt your storm drain
and pledge to keep it
clean.**

**www.cuyahogaswcd.org
#lakeeriestartshere**

*This information is part of a random address mailing for your
community's National Pollutant Discharge Elimination System
permit program under the USEPA Clean Water Act.
www.epa.gov/npdes*



3311 Perkins Ave., Suite 100
Cleveland, OH 44114

STORM WATER



Slow It Down Spread It Out Soak It In

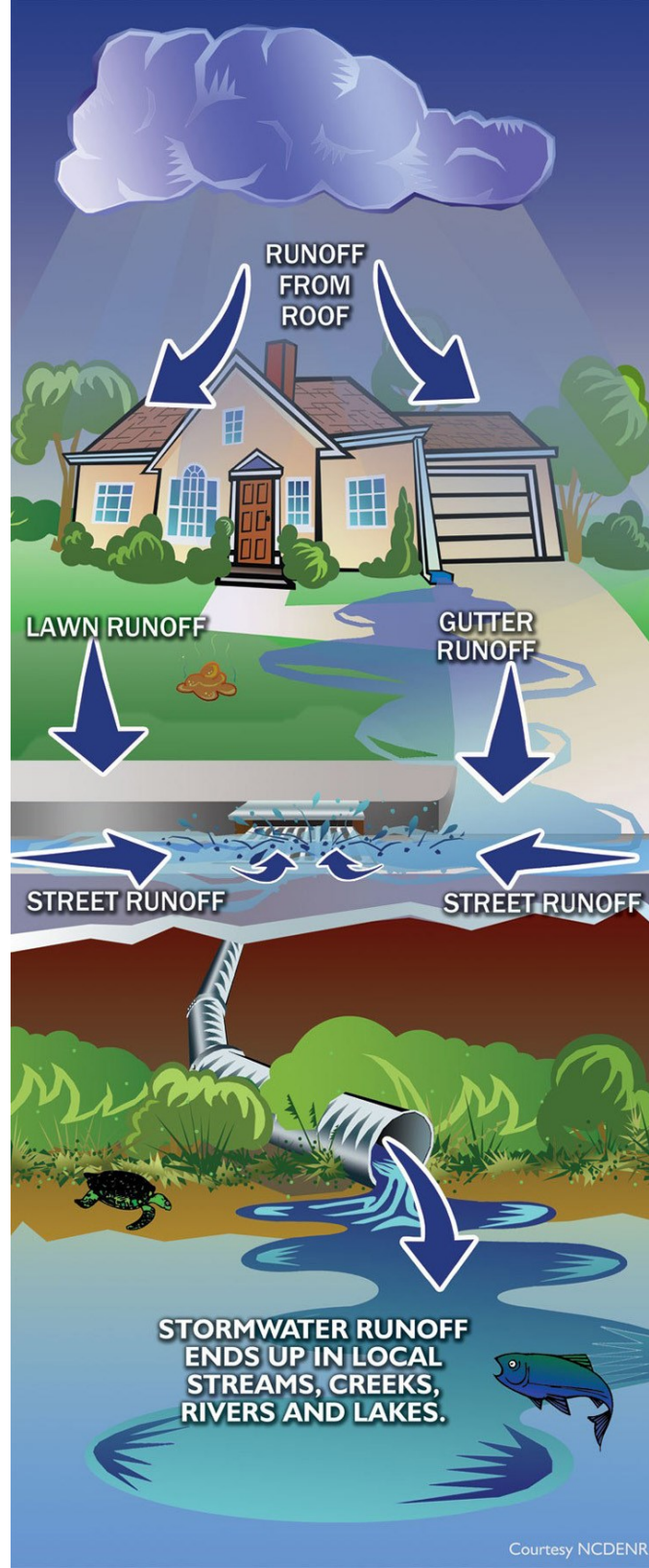
Your actions on the land directly impact the quality of our rivers, streams and lakes.

How so?

Rainwater from roofs, lawns, driveways, streets, roadside ditches and parking lots drains to small creeks that flow into streams before eventually entering Lake Erie.

On its way, stormwater picks up oil and antifreeze that drips from our cars, excess fertilizer and pesticides from our lawns, litter, grass clippings, leaves, and pet waste.

Excess runoff scours streams, reducing the quality of habitat for fish and other stream-dwelling organisms.



Courtesy NCDENR

What can you do to help?

- Choose environmentally friendly household products
- Check your vehicles and equipment for leaks and spills. Clean up spills with absorbent materials
- Use a commercial car wash to keep soapy water out of storm drains
- Plant a rain garden, a landscaped area with native plants, to capture and filter stormwater runoff
- Install a rain barrel to collect water coming off your roof to be used in your yard or garden
 - Pick up pet waste and dispose of it properly
- Fertilize sparingly and carefully
- Get a soil test done for your lawn and garden
- Compost leaves instead of bagging them or throwing them into the stream or sweeping them into the street