

Types of Illegal Dumping



Sediment

- orange, yellow, red
- odorless
- high turbidity



Construction Runoff

- mud and debris on roadways
- grey, cloudy, odorless in water
- high in sediments and turbidity



Sanitary Waste Water (Sewage)

- strong **foul smell**, grey color
- bubbles, foam, waste, toilet paper

Photos Courtesy of Prince William County, VA Illicit Discharge webpage and SWCD staff.

TO REPORT ILLEGAL DUMPING CALL:

THE CITY'S SERVICE
DEPARTMENT

WHERE DUMPING OBSERVED

OR

CUYAHOGA COUNTY
BOARD OF HEALTH

216-201-2000

OR

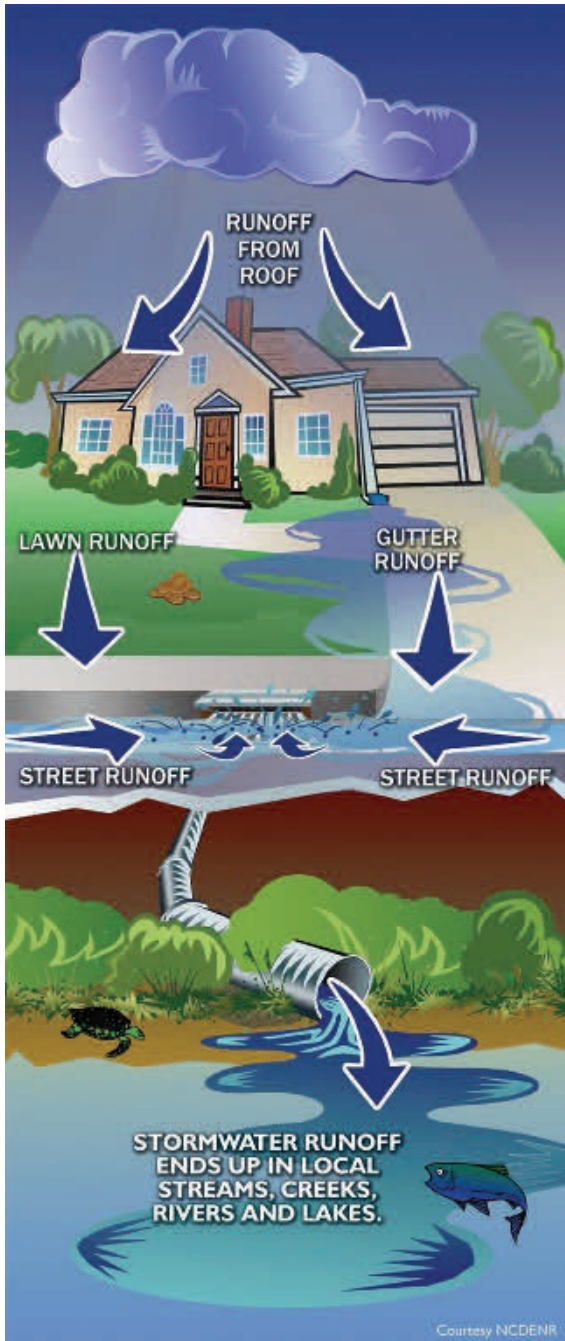
OHIO EPA

1-800-282-9378

Illegal Dumping Identifying and Taking Action



Where Does Stormwater Go?



The Importance of Reporting Illegal Dumping

All rain and snowmelt flows off our roofs, lawns, and driveways, into the street and storm sewers, and directly to our rivers and lakes ***untreated!***

As stormwater runoff travels, it picks up pollutants and chemicals that may be harmful to public health & the environment. Sometimes, pollutants are directly dumped into storm drains and waterways from households or businesses.

Deliberate discharging of a pollutant that does not consist of stormwater into the storm drain is called an **illicit discharge**. These discharges contribute to high levels of pollutants, including heavy metals, toxics, oil and grease, solvents, nutrients, viruses and bacteria to receiving waterbodies.

*Suspicious discharges should be reported immediately
(local contact numbers on back page).*

Types of Illegal Dumping

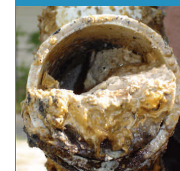


Auto Materials (Oil/Fuel)

-rainbow sheen on storm drain, paved and water surfaces

Soaps & Detergents

-white, milky color
-bubbles, foam, high turbidity



Grease (Petroleum & Cooking)

-yellow, golden, brown color
-clumps and strings of material, stale grease odor
-grease clog in pipe, cooking oil in stream



Yard Waste

-grass clippings, woody debris, leaves, and other vegetation

