

# Euclid Creek Watershed Program Partnership

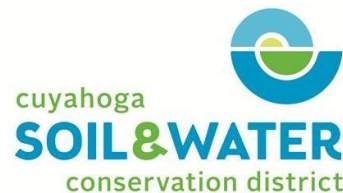
---

## EUCLID CREEK WATERSHED COUNCIL

BEACHWOOD • CLEVELAND • EUCLID

HIGHLAND HEIGHTS • LYNTHURST • MAYFIELD

MAYFIELD HEIGHTS • RICHMOND HEIGHTS • SOUTH EUCLID



## Welcome!

As folks arrive, there are some hard copies of previously emailed referenced materials if folks would like to have one.

### All Members & Guests:

Please feel free to take a copy of the Agenda

### For Voting Members:

Please also take a copy of the March 2023 Draft Minutes

# Euclid Creek Watershed Council

## July 10, 2023 Meeting

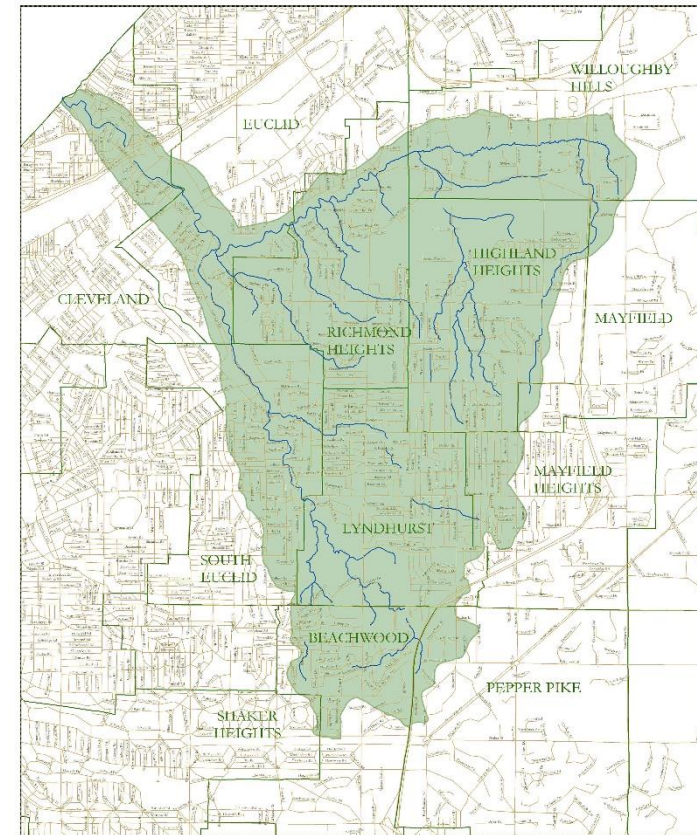
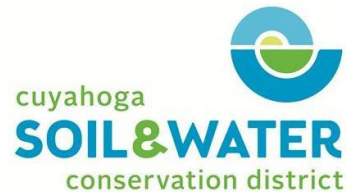
### Euclid Creek Watershed Program Partnership

#### EUCLID CREEK WATERSHED COUNCIL

BEACHWOOD • CLEVELAND • EUCLID

HIGHLAND HEIGHTS • LYNDHURST • MAYFIELD

MAYFIELD HEIGHTS • RICHMOND HEIGHTS • SOUTH EUCLID



0.9 0.45 0 0.9 1.8 2.7 Miles



# Agenda

---

- Welcome & Introductions
- Approve March 2023 Minutes
- Updates from Watershed Coordinator
- Presentation from USACE
- Additional Business
- Decide location for fall meeting
- Field Trip to E 185<sup>th</sup> Spillway Project
- Adjourn Meeting



# Roll Call / Introductions

Name, Community



# Euclid Creek Watershed Program

---

## Goals:

- To improve the health of the environment in the Euclid Creek Watershed.
- To participate, as public officials and stakeholders, in the implementation of the Euclid Creek Watershed Action Plan.

## Missions:

- To address common environmental, stormwater, and development concerns in the Euclid Creek Watershed.
- To raise awareness about and preserve the natural features of the Euclid Creek Watershed.
- To implement programs and practices that protect and restore healthy soil and water resources.



**EUCLID CREEK  
WATERSHED COUNCIL**

BEACHWOOD • CLEVELAND • EUCLID  
HIGHLAND HEIGHTS • LYNDHURST • MAYFIELD  
MAYFIELD HEIGHTS • RICHMOND HEIGHTS • SOUTH EUCLID

# Approval of the Minutes

- From March 13, 2023

# Updates from Watershed Coordinator



Presentations/Events  
**17**



Unique Participants  
**197 people**



Communities Reached  
**40 communities**



Volunteer Hours  
**705 hours**



Volunteer Match  
**\$3,558.74**





Gardens, rain barrels, volunteers

---



# Getting the Word Out



Invasive Trade-Up Mailing  
**1,371 recipients**



Dusty Goldenrod Preserve  
Mailing (FOEC)  
**311 recipients**



Residential Riparian  
Workshop Mailing  
**782 recipients**



Highland Heights – Highland  
Heights Newsletter  
**10,173 recipients**



Mayfield Village – Voice of  
the Village Newsletter  
**3,264 recipients**



Social Media  
**7,438 people reached**



April, May, June e-news  
**680 average opens**



An aerial photograph of a golf course. A stream flows through the center, with a small bridge crossing it. To the right of the stream is a large, irregular sand trap. The surrounding grass is green, and there are some bare trees on the left side.

## Projects

- Mayfield Sands, getting signatures on environmental covenant now!
- Mayfair Lake, planning community meeting for late summer/early fall
- StoneWater Golf – conceptual design continues, working towards something to include in the NPS-IS Plan





# USACE AUTHORITIES & OPPORTUNITIES FOR ASSISTANCE

Jen Brancho  
Biologist / PAS Program Manager  
Planning Management Team  
Date: 10 July 2023

*Overview & Discussion with Euclid Creek Watershed Council*



US Army Corps  
of Engineers®





# AGENDA



1. **Overview of Planning Authorities (Planning Assistance to States, Floodplain Management Services)**
2. Overview of Construction Authorities (Great Lakes Fishery and Ecosystem Restoration, Continuing Authorities Program)
3. Questions / Discussion & Wrap-up





# PLANNING ASSISTANCE TO STATES (PAS)



**Authorizing Language:** Section 22 of the Water Resources Development Act (WRDA) of 1974

**Potential Partners:** Local governments, States, Tribes, and U.S. Territories

- Includes nonprofit organizations, Tribal organizations, and regional coalitions of government with consent of the affected local government

**Purpose:** to assist in preparation of comprehensive plans for the development, utilization, and conservation of water and related land resources

- Detailed design and/or construction is not authorized under the program

**Funding:** Limit of \$5M federal funds per State or Tribe

- Cost share 50% federal, 50% nonfederal
- Individual studies range from \$25,000 to \$100,000+

## Key Considerations:

- No site-specific structural designs or construction specifications
- Implementation is responsibility of sponsor
- Annual program limit of \$5M per state, tribe, or territory
- Projects started on a rolling basis – first come, first served
- Typical study duration between 12 and 24 months
- Letter of Intent must be received by USACE to initiate process



# TYPES OF ASSISTANCE



**Comprehensive Water Resources Planning:** planning for the development, utilization, and conservation of water and water-related resources of drainage basins, watersheds, or ecosystems located within the boundaries of that state(s)

**Cost-Share Requirements:** 50% Federal, 50% nonfederal

- In-kind services can be accepted to meet cost share requirements
- Volunteer labor cannot be used to meet cost-share requirements
- Cost share waiver for tribes and territories (up to \$665,000 for Fiscal Year 2023)

**Study Duration:** 12 – 24 months (typical)







# TYPES OF ASSISTANCE

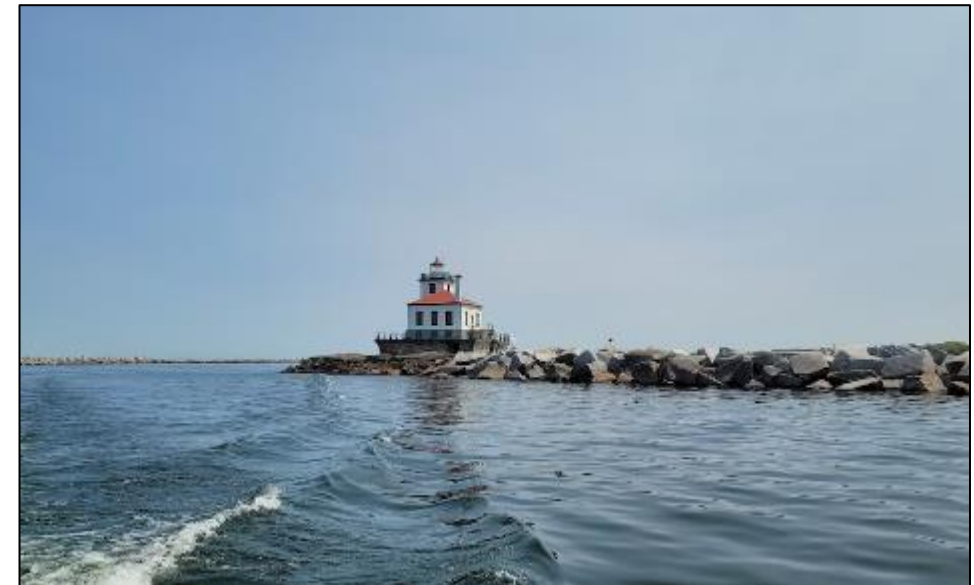


**Technical Assistance:** technical support of planning efforts related to the management of the state water resources

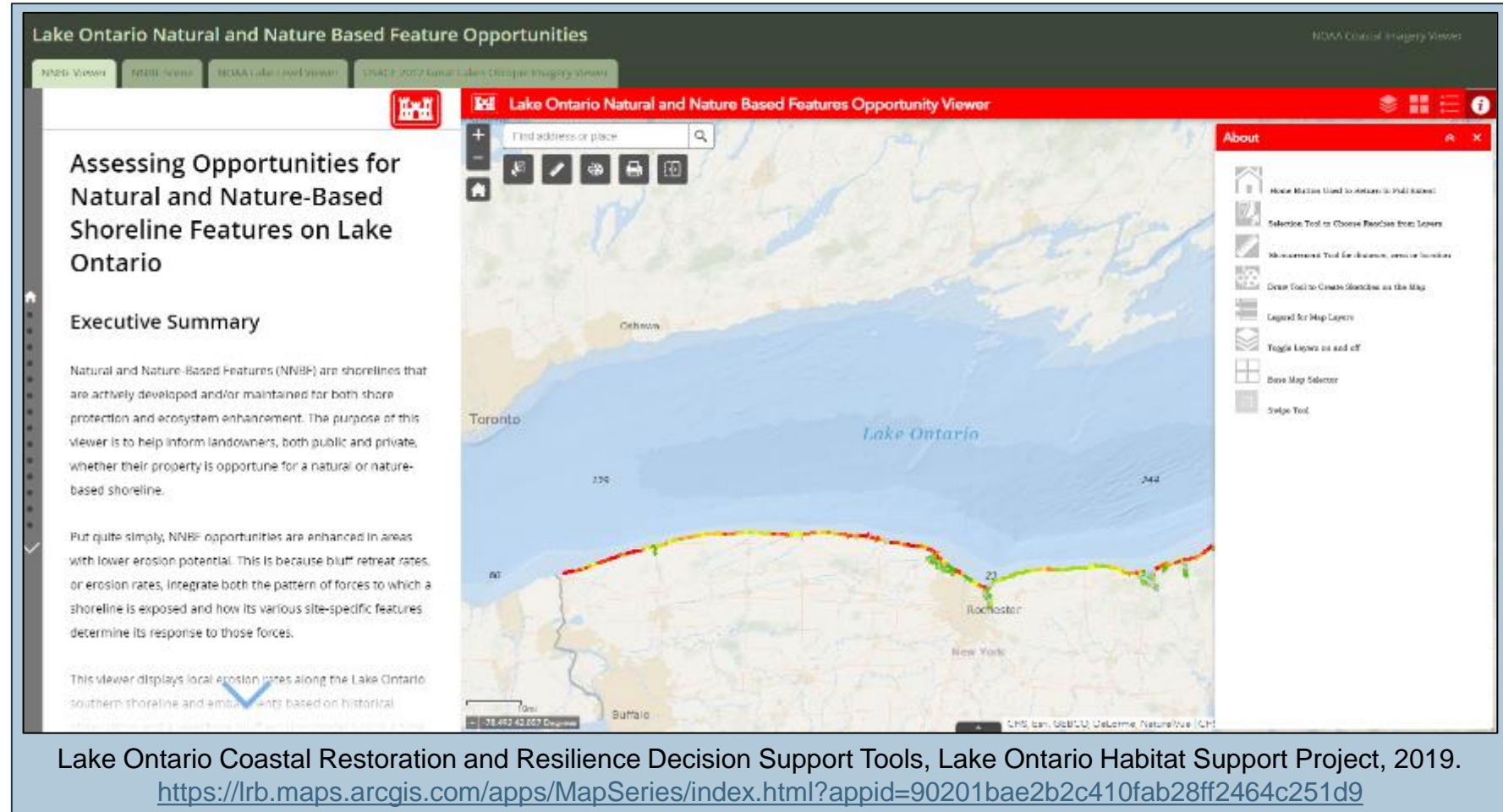
**Cost-Share Requirements:** 50% Federal, 50% nonfederal

- In-kind services cannot be accepted to meet cost share requirements
- Cost share waiver for tribes and territories (up to \$665,000 for Fiscal Year 2023)

**Study Duration:** 12 – 24 months (typical)



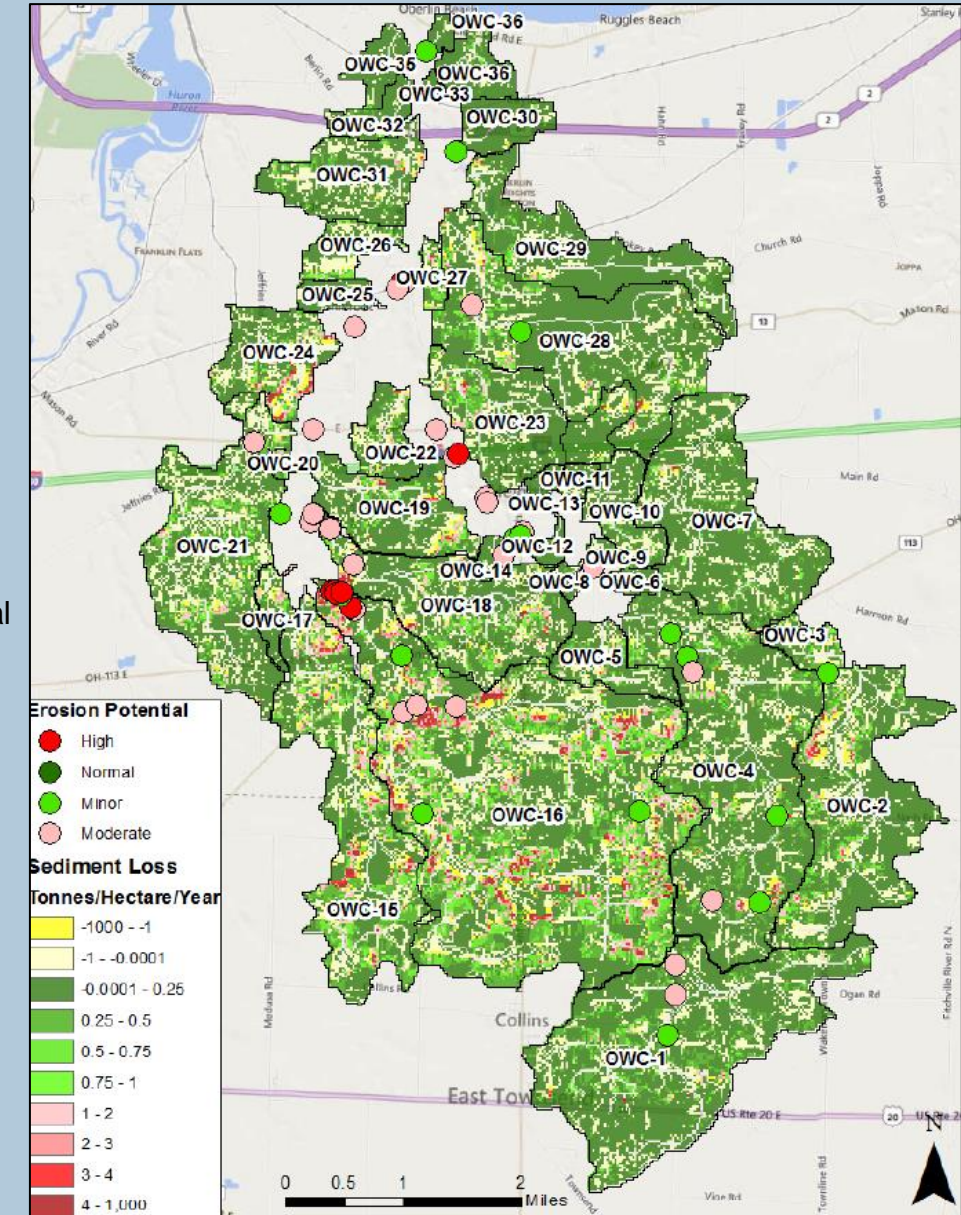
- Stormwater management plans
- Identification of priority areas for stormwater management
- GIS-based planning tools for sediment and coastal management
- Nature-based solutions for coastal erosion
- Decision support tools
- Economic analyses related to water resources





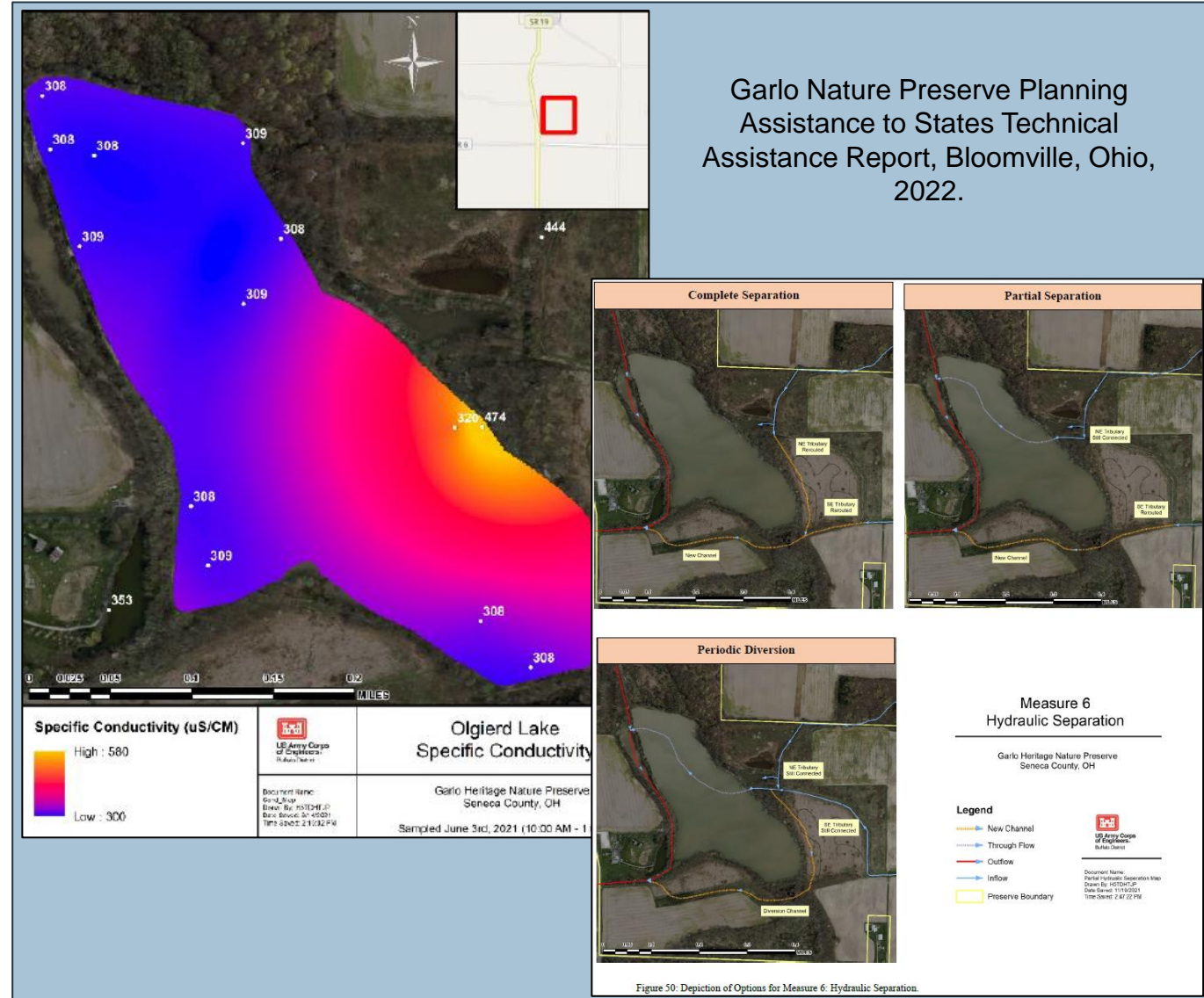
- Wetland resource identification
- Stream quality assessment
- Sediment, erosion, or sediment transport modeling and analysis
- Conceptual identification of alternatives for habitat restoration
- Watershed management plans
- Identification of priority areas for restoration or conservation

Old Woman Creek Sediment Transport Analysis and Regional Training (START) Assessment, 2014.



- Wetland resource identification
- Stream quality assessment
- Sediment, erosion, or sediment transport modeling and analysis
- Conceptual identification of alternatives for habitat restoration
- Watershed management plans
- Identification of priority areas for restoration or conservation

Garlo Nature Preserve Planning Assistance to States Technical Assistance Report, Bloomville, Ohio, 2022.







# FLOODPLAIN MANAGEMENT SERVICES (FPMS)



**Authorizing Language:** Section 206 of the Flood Control Act of 1960

**Potential Partners:** Local Governments, States, Tribes, and U.S. Territories

**Purpose:** to support effective floodplain management by providing a wide range of technical services and planning guidance

- Detailed design and/or construction is not authorized under the program

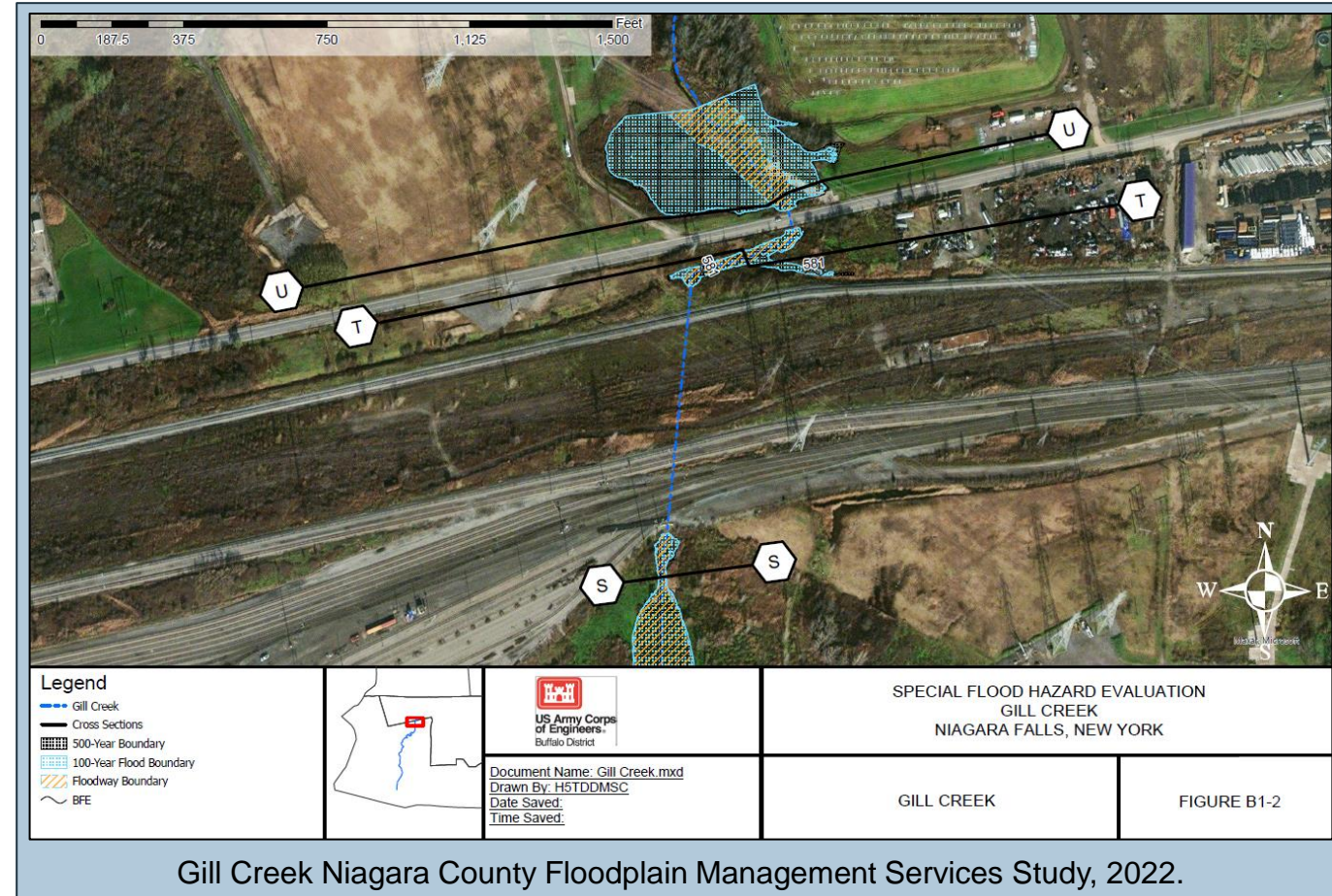
**Funding:** 100% federally funded studies for state, regional, or local governments or Tribes

- Services provided for other entities on a cost recovery basis
- Individual studies range from \$25,000 to \$200,000

## Key Considerations:

- No site-specific structural designs or construction specifications
- No detailed hydrologic and hydraulic modeling
- Implementation is responsibility of sponsor
- Call for proposals in June 2024
- Projects compete for funding at regional and national levels
- Typical study duration between 12 and 24 months
- Letter of Intent must be received by USACE to initiate process

- Flood inundation mapping
- Floodplain modeling using HEC-RAS/HMS or PC SWMM
- Nonstructural or structural flood risk management measure development
- Rough order-of-magnitude cost estimates for flood risk management measures
- Loss avoidance studies







# AGENDA



1. Overview of Planning Authorities (Planning Assistance to States, Floodplain Management Services)
- 2. Overview of Construction Authorities (Great Lakes Fishery and Ecosystem Restoration, Continuing Authorities Program)**
3. Questions / Discussion & Wrap-up



# GREAT LAKES FISHERY AND ECOSYSTEM RESTORATION (GLFER)



**Authorizing Language:** Section 506 of the Water Resources Development Act (WRDA) of 2000

**Potential Partners:** Local Governments, States, Tribes, and U.S. Territories

**Purpose:** to plan, design, and implement projects that restore ecosystems across the Great Lakes Watershed

- Implemented in partnership with the Great Lakes Fishery Commission

**Funding:** Base funding provided annually through Energy & Water Appropriations

- Cost share required and varies by phase:
  - Feasibility: First \$100,000 federal, then 65% federal and 35% nonfederal
  - Design and Implementation: 65% federal and 35% nonfederal
- Total Federal expenditure per project - \$10 million

## Types of Projects:

- Restoration of wetlands and aquatic habitats on public lands, parks, and preserves
- Dam removal to establish free-flowing rivers
- Fish passage over existing structures
- Spawning and nursery habitat improvements
- Restoration of coastal habitat along Great Lakes shorelines
- Structures to control invasive species





# GREAT LAKES FISHERY AND ECOSYSTEM RESTORATION (GLFER)

23



## HARPERSFIELD SEA LAMPREY BARRIER IN GENEVA, OH

**Purpose:** Effectively prevent migration of sea lamprey in the Grand River upstream of the Harpersfield Dam

**Project Scope:** Construct new sea lamprey barrier upstream of existing dam, remove existing fish ladder, and construct several sea lamprey traps for capture and control





# CONTINUING AUTHORITIES PROGRAM (CAP)



**Authorizing Language:** Varies across nine legislative authorities

**Potential Partners:** Local Governments, States, Tribes, and U.S. Territories

**Purpose:** to plan, design, and implement water resources projects of limited size, cost, scope, and complexity without additional project specific congressional authorization

**Funding:** Cost share required

- Cost share varies based on type and phase of project
- Total Federal expenditure per project - \$10 million

## Authorities:

- Section 14 – Emergency Streambank and Shoreline Protection
- Section 103 – Beach Restoration and Shoreline Protection
- Section 107 – Small Navigation Projects
- Section 111 – Mitigation of Shoreline Erosion Damage
- Section 204 – Regional Sediment Management
- Section 205 – Flood Risk Management
- Section 206 – Aquatic Ecosystem Restoration
- Section 208 – Clearing and Snagging of Waterways
- Section 1135 – Modification to Projects for Improvement of the Environment





# CONTINUING AUTHORITIES PROGRAM (CAP)



## SECTION 14: EMERGENCY STREAMBANK STABILIZATION & SHORELINE PROTECTION

**Scope:** Develop and construct streambank and shoreline protection projects to protect endangered highways, highway bridge approaches, public works facilities, and public and private nonprofit public facilities limited to a federal cost of \$5,000,000

**Study Cost Share:** First \$100,000 of feasibility phase is a 100% federal cost, further study costs are 50% federal/50% non-federal.

**Design & Construction Cost Share:** 65% federal/35% non-federal.

### Ottawa River (Toledo, OH):

- 2,200 ft of streambank stabilization along Shoreland Avenue
- Bank stabilized with rip rap and granular fill covered with seeded topsoil
- Stone groins installed every 100 ft to improve fish habitat



# CONTINUING AUTHORITIES PROGRAM (CAP)



- **Letter of Intent (LOI)** from a non-federal Sponsor initiates the project
- **Federal Interest Determination (FID)** approval from USACE Division
- **Feasibility Cost Sharing Agreement (FCSA)** signed by non-federal Sponsor
- **Feasibility Study (FS) with Integrated Environmental Assessment (EA)**
  - 24 month process to complete Detailed Project Report (DPR)
  - Cost share: 100% federal for first \$100,000; additional at 50% federal; 50% non-federal
- **Sign Project Partnering Agreement (PPA)**
  - Defines federal and non-federal contributions
  - Some non-federal contributions may be in the form of in-kind services and credit for lands, easements, rights-of-way, relocations, and disposal areas (LERRDs)
  - Defines long term operations and maintenance responsibilities
- **Design & Construction**
  - Cost share: varies by authority from 25% to 90% federal funding, often 65% federal.
- **Operation and Maintenance**
  - All operation, maintenance, repair, rehabilitation and replacement (OMRR&R) of the project in the future is at 100% non-federal cost





# PROGRAM MANAGERS



## **Planning Assistance to States**

Jen Brancho, [jennie.m.brancho@usace.army.mil](mailto:jennie.m.brancho@usace.army.mil) or 216-598-3463

## **Floodplain Management Services**

Madeleine Dewey, [madeleine.b.dewey@usace.army.mil](mailto:madeleine.b.dewey@usace.army.mil) or 716-327-8677

## **Great Lakes Fishery and Ecosystem Restoration**

Josh Unghire, [joshua.unghire@usace.army.mil](mailto:joshua.unghire@usace.army.mil) or 716-879-4345

## **Continuing Authorities Program**

Craig Forgette, [craig.m.forgette@usace.army.mil](mailto:craig.m.forgette@usace.army.mil) or 716-879-4187



# AGENDA



1. Overview of Planning Authorities (Planning Assistance to States, Floodplain Management Services)
2. Overview of Construction Authorities (Great Lakes Fishery and Ecosystem Restoration, Continuing Authorities Program)
- 3. Questions / Discussion & Wrap Up**

**Thank you!**

Jen Brancho, Biologist/Planner  
[Jennie.m.brancho@usace.army.mil](mailto:Jennie.m.brancho@usace.army.mil)  
216-598-3463



# Additional Business



## Euclid Creek Watershed Program Partnership

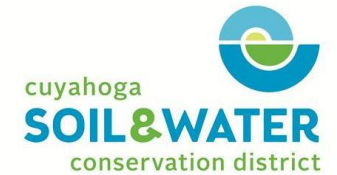
---

### EUCLID CREEK WATERSHED COUNCIL

BEACHWOOD • CLEVELAND • EUCLID

HIGHLAND HEIGHTS • LYNTHURST • MAYFIELD

MAYFIELD HEIGHTS • RICHMOND HEIGHTS • SOUTH EUCLID



# Next meeting(s)

## Euclid Creek Watershed Program Partnership

### EUCLID CREEK WATERSHED COUNCIL

BEACHWOOD • CLEVELAND • EUCLID

HIGHLAND HEIGHTS • LYNDBURST • MAYFIELD

MAYFIELD HEIGHTS • RICHMOND HEIGHTS • SOUTH EUCLID



March 13: ECWC Regular  
Meeting (Approval of Work Plan)



July 10: ECWC Regular Meeting  
(Presentation from regional  
partner)



November 13: ECWC Regular  
Meeting (Election of Chair and  
Vice Chair)



# E 185<sup>th</sup> Spillway

---

Parking at gas station, carpool if possible.

Mobil : 1201E E 185th St, Cleveland, OH 44119

Marathon: 18501 Nottingham Rd, Cleveland, OH 44119



**Kate Chapel**  
**Watershed Coordinator**  
**Cuyahoga Soil & Water Conservation District**  
**216-524-6580 x1002**

Email: [kchapel@cuyahogaswcd.org](mailto:kchapel@cuyahogaswcd.org)  
Website: [www.EuclidCreekWatershed.org](http://www.EuclidCreekWatershed.org)

# Thank You!

**EUCLID CREEK  
WATERSHED COUNCIL**

BEACHWOOD • CLEVELAND • EUCLID  
HIGHLAND HEIGHTS • LYNDHURST • MAYFIELD  
MAYFIELD HEIGHTS • RICHMOND HEIGHTS • SOUTH EUCLID





# Adjourn

---