

How do you implement these suggestions?

RAIN GARDENS

Download the Rain Garden manual from our website www.cuyahogaswcd.org/programs/rain-gardens-native-plants or call us and we will mail one to you.

RAIN BARRELS

Visit our rain barrel page and come to a Cuyahoga SWCD workshop in the Spring thru the Fall www.cuyahogaswcd.org/programs/rain-barrels

NATIVE PLANTS

Take up some of your turf grass and install a native plant garden. Seeds are available at www.cuyahogaswcd.org/programs/native-seed-sale



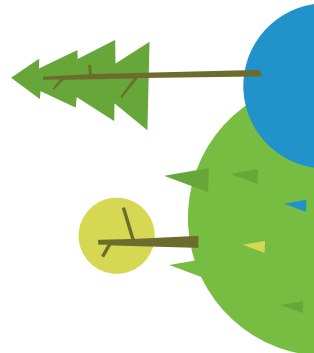
Nonprofit Org.
US Postage
PAID
Cleveland, OH
Permit No. 3666

CUYAHOGA SOIL & WATER CONSERVATION DISTRICT

6100 West Canal Road
Valley View, OH 44125

Phone 216.524.6580
Fax 216.524.6584

www.cuyahogaswcd.org



LAKE ERIE STARTS HERE



LAKE ERIE STARTS HERE!

Your home is the first line of defense for the health of Lake Erie!

Rain and snow melt that runs over your property and into the storm drain flows into our waterways untreated (and contributes to sewer overflows). It brings with it pollutants such as fertilizer, pesticides, dog waste, winter road salt, oil and gas, litter, eroded soil, construction site runoff, and so much more.



For more information, contact your community's Stormwater Pollution Prevention Program or the Cuyahoga Soil & Water Conservation District at 216/524-6580

www.cuyahogaswcd.org/programs/lake-erie-starts-here



YOU CAN HELP BE THE SOLUTION TO STORMWATER POLLUTION AND CONTRIBUTE TO THE HEALTH OF OUR GREAT LAKE

- Plant a rain garden to capture and infiltrate stormwater runoff.
- Install a rain barrel and harvest water on-site to water a garden or lawn.
- Properly maintain your car to avoid oil and gas leaks.
- Use road salt sparingly and sensibly and sweep up extra.
- Establish a no-mow zone around backyard streams and wetlands.
- Pick up after your dog to avoid bacteria like *E. coli* washing into storm drains.
- Wash your car on the lawn (not in the driveway) or take it to a commercial car wash
- Remove some turf grass and replace with native plants.