

# Only Rain Down the Drain

Most pollution affecting our streams and lakes comes from nonpoint sources, such as storm drains. This means that pollution does not come from a single point, but comes from stormwater (rainwater) running across the land, picking up motor oil, pet waste, insecticides, fertilizers, road salts, and garbage before depositing it in our local waterways. This pollution is not only dangerous for fish and wildlife, but it is also dangerous for people!



Storm drains along many neighborhood streets collect the contaminated water and dump it directly into streams, without being treated first. Storm drains are merely pipes of waste transfer; from our streets to our creeks. The Northeast Ohio Regional Sewer District estimates that in the Cuyahoga River and Lake Erie watersheds, there are 19.7 billion gallons of stormwater emptied into streams each year!

[#lakeeriestartshere](https://www.cuyahogaswcd.org)  
[www.cuyahogaswcd.org](https://www.cuyahogaswcd.org)

# Only Rain Down the Drain

Most pollution affecting our streams and lakes comes from nonpoint sources, such as storm drains. This means that pollution does not come from a single point, but comes from stormwater (rainwater) running across the land, picking up motor oil, pet waste, insecticides, fertilizers, road salts, and garbage before depositing it in our local waterways. This pollution is not only dangerous for fish and wildlife, but it is also dangerous for people!



Storm drains along many neighborhood streets collect the contaminated water and dump it directly into streams, without being treated first. Storm drains are merely pipes of waste transfer; from our streets to our creeks. The Northeast Ohio Regional Sewer District estimates that in the Cuyahoga River and Lake Erie watersheds, there are 19.7 billion gallons of stormwater emptied into streams each year!

[#lakeeriestartshere](https://www.cuyahogaswcd.org)  
[www.cuyahogaswcd.org](https://www.cuyahogaswcd.org)

# What Can You Do To Help?

- Never litter! Whether trash or a liquid, it all drains to the lake.
- Adopt and care for your own storm drain by cleaning it regularly.
- Contact Cuyahoga SWCD to coordinate a Storm Drain Stenciling event in your community.
- Report any illegal dumping to your community Service Department, Ohio EPA or to the Cuyahoga County Board of Health.



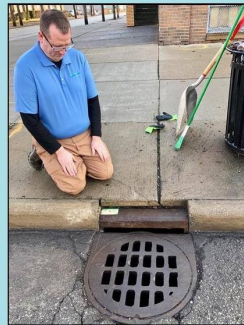
**Does your storm drain  
spark joy?**



**If not, declutter  
your storm drain.**



**Take a step back to admire  
your storm drain.**



**Thank your storm drain  
for all it does for you.**

# What Can You Do To Help?

- Never litter! Whether trash or a liquid, it all drains to the lake.
- Adopt and care for your own storm drain by cleaning it regularly.
- Contact Cuyahoga SWCD to coordinate a Storm Drain Stenciling event in your community.
- Report any illegal dumping to your community Service Department, Ohio EPA or to the Cuyahoga County Board of Health.



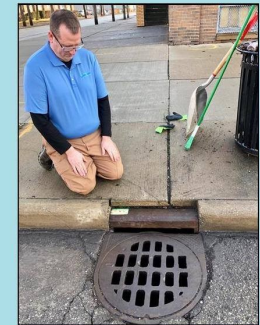
**Does your storm drain  
spark joy?**



**If not, declutter  
your storm drain.**



**Take a step back to admire  
your storm drain.**



**Thank your storm drain  
for all it does for you.**