

We need your help!

Environmental Awareness Survey

Your city's Storm Water Coordinator is encouraging local citizens to participate in a survey to help assess the level of awareness residents have with regard to common household activities and their potential impact on the quality of our local water resources.

Answers provided will serve as a tool to develop water quality educational materials and will help to determine appropriate methods for delivery of educational messages to targeted audiences. Over time, the survey will help gauge the success of educational programs and ensure the effective spending of public funds.

**To take the survey,
click the link below**

<http://tinyurl.com/swcdsurvey>

Your participation is
greatly appreciated.

Cuyahoga Soil and Water Conservation District's mission is to promote conservation of land and aquatic resources in a developed environment through stewardship, education, and technical assistance.

WWW.CUYAHOGASWCD.ORG 216/524-6580



6100 West Canal Road
Valley View, OH 44125

An Equal Opportunity
Employer and Provider

Nonprofit Org.
US Postage
PAID
Cleveland, OH
Permit No. 3666

TAKING ROOT FOR CLEAN WATER



*Planting trees and native
plants helps to keep our
water clean*

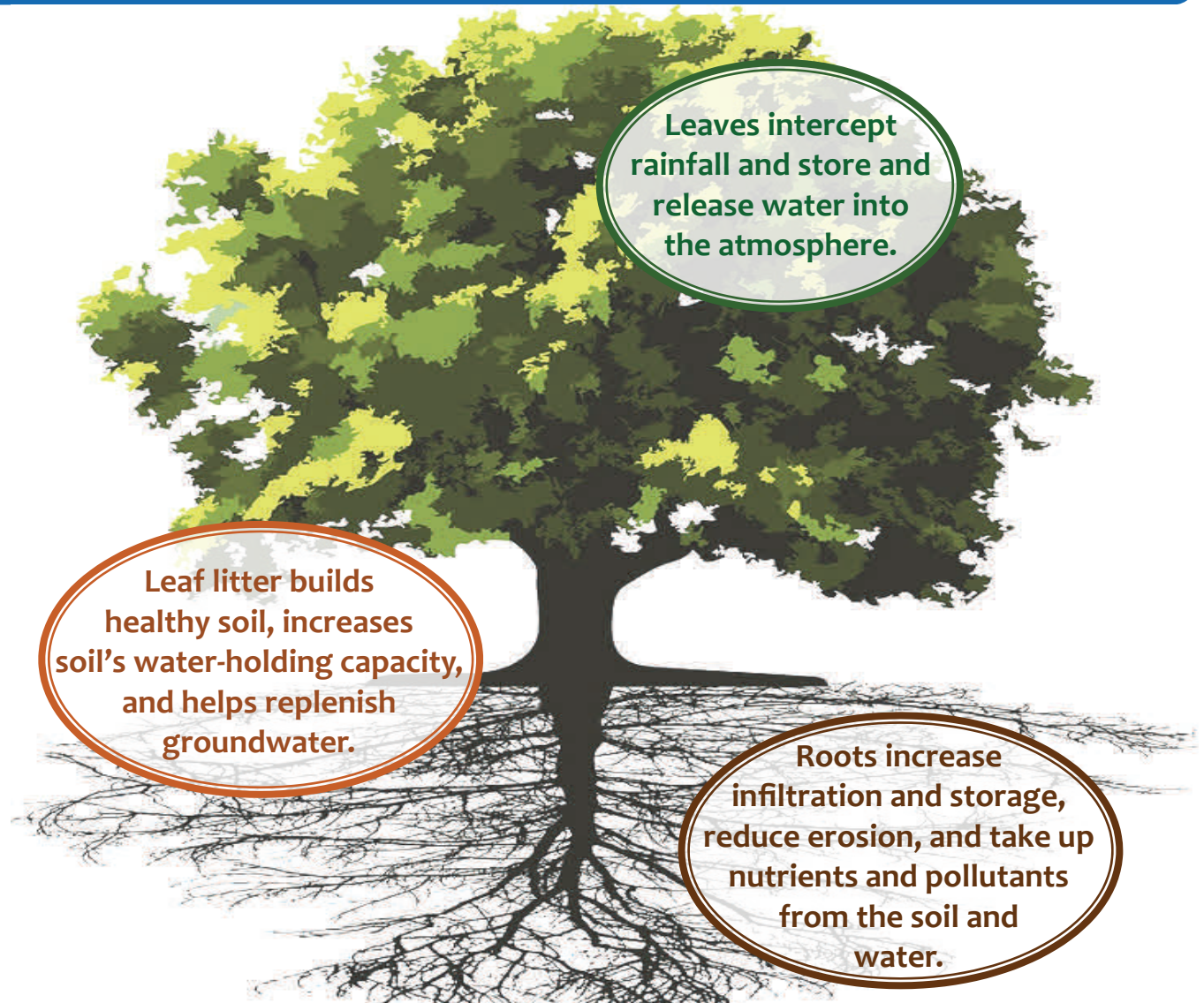
Trees and Native Plants provide many services beyond the beauty and curb appeal they lend to streets and communities.

There are countless reasons why trees and native plants benefit our communities.

Did you know that the simple act of planting a tree also helps to keep our waters clean?



Trees effectively decrease the impact of heavy rainfall by capturing and filtering pollution and sediment contained in storm runoff. By intercepting rainfall before it can get into nearby storm drains and creeks, they help reduce flooding. These abilities to reduce the volume and improve the quality of storm water are some of the most overlooked and undervalued services that trees provide. The more native tree and plant cover that we have in our neighborhood, the healthier our creeks and our communities will be!



Leaves intercept rainfall and store and release water into the atmosphere.

Leaf litter builds healthy soil, increases soil's water-holding capacity, and helps replenish groundwater.

Roots increase infiltration and storage, reduce erosion, and take up nutrients and pollutants from the soil and water.

Did You Know...

A Sugar Maple tree with a diameter of 15" intercepts about 1400 gallons of storm water and has a monetary benefit of \$103 - \$161 annually.

(To calculate your tree's benefits, go to treebenefits.com/calculator.)